

Guide of MC100-LED Program Editor



Introduction

This software is Mc100 series super master for program editing and uploading.

Download and install software:

Download the MC100 software at www.mc100.com.cn "MC100_XXX_setup.exe"

Run the MC100 program editing and management software on your computer .




Directory

1. Edit the program	3
1.1 The program editor adds a program page	3
1.2 Program page, program box, icon detailed introduction	3
1.3 Program to save	9
2. The Connection Method.....	9
2.1 A key connection.....	9
2.2 Find led screen and input IP connection.....	9
2.2.1 Find led screen connection	9
2.2.2 Input IP connection.....	10
3. Upload programs.....	10
3.1 Upload with click on key connect to palybox.....	10
3.2 Upload with click monitor LED screen.....	10
3.3 Upload program with USB flash drive	10
4. How does set the screen size?	11
5. How to set the receive card type? How to switch between gigabit and DVI?.....	12


1. Edit the program

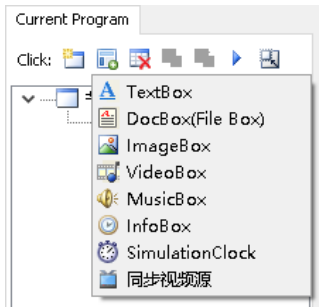
1.1 The program editor adds a program page



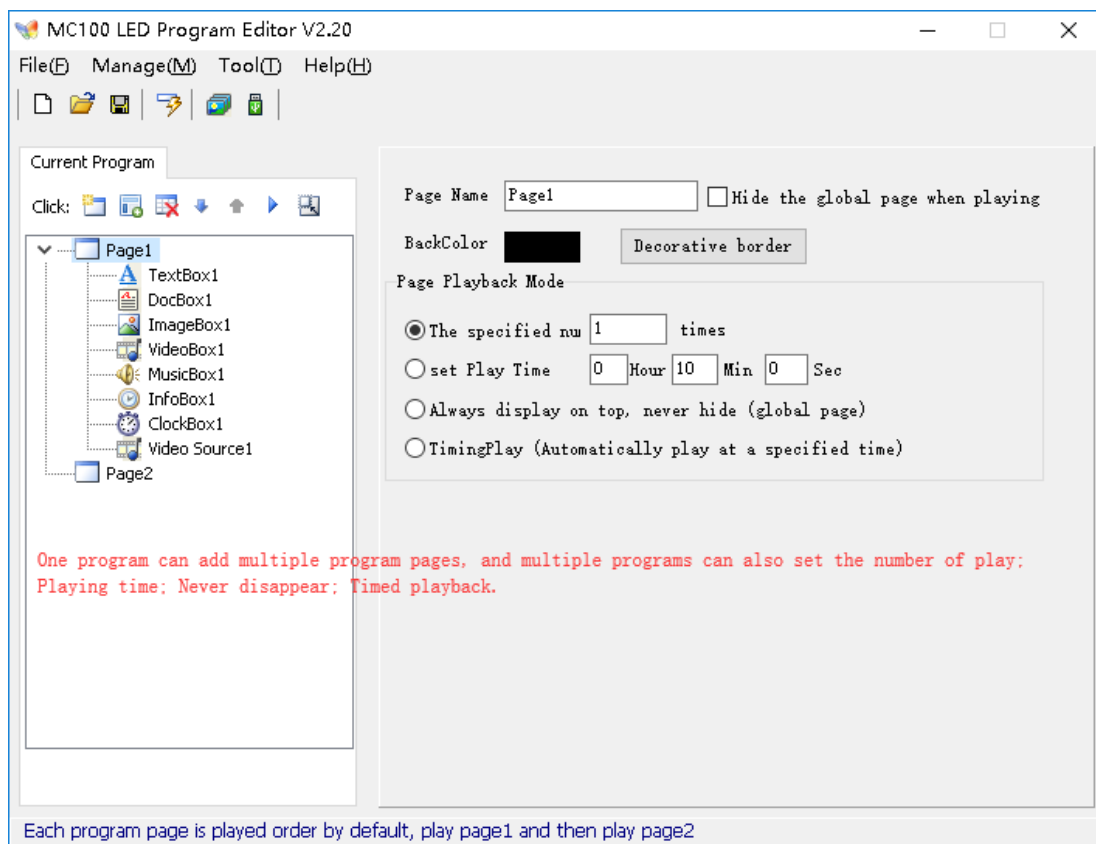
Open the Mc100-led program editor, Click on the  add program pages.

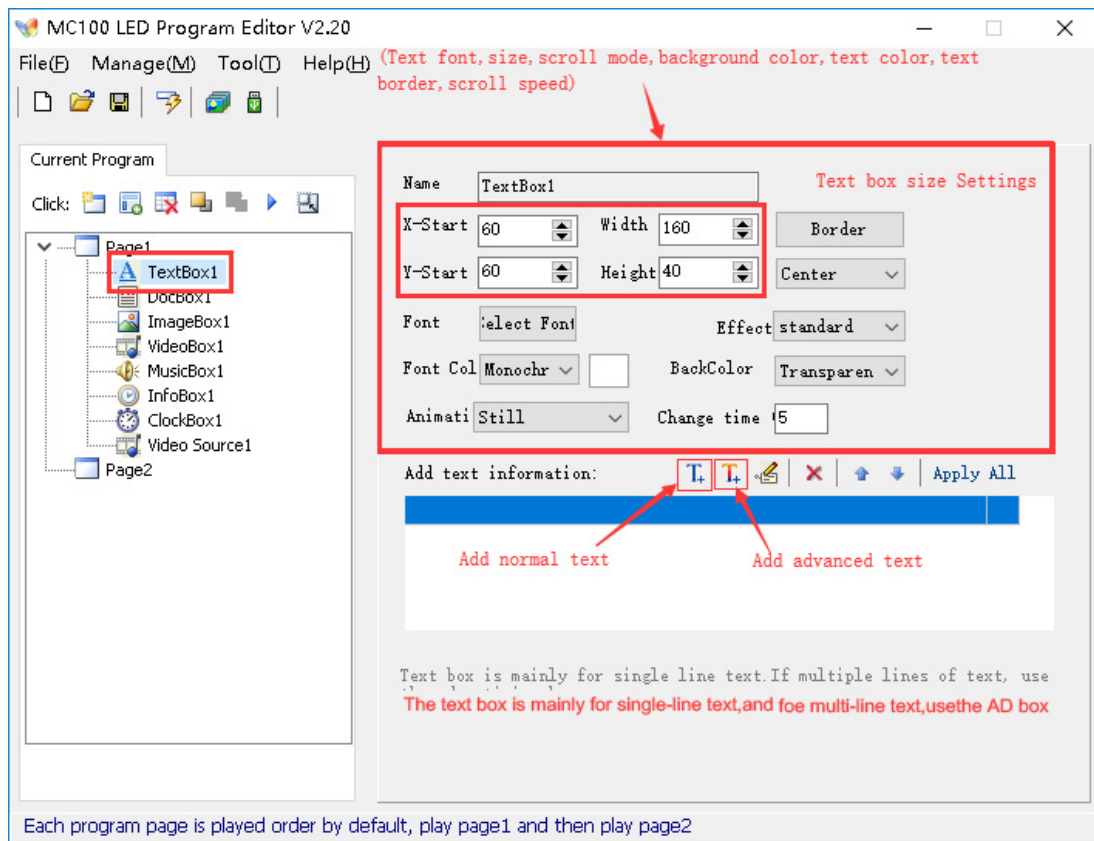
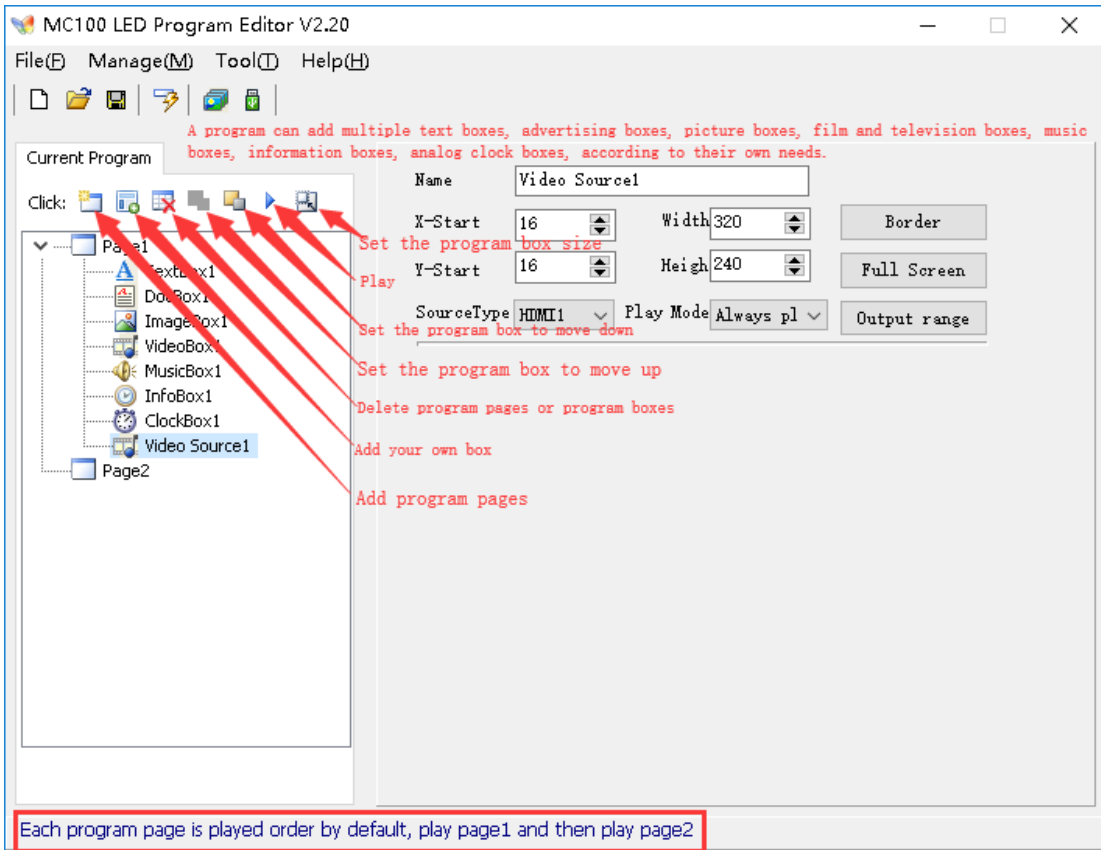


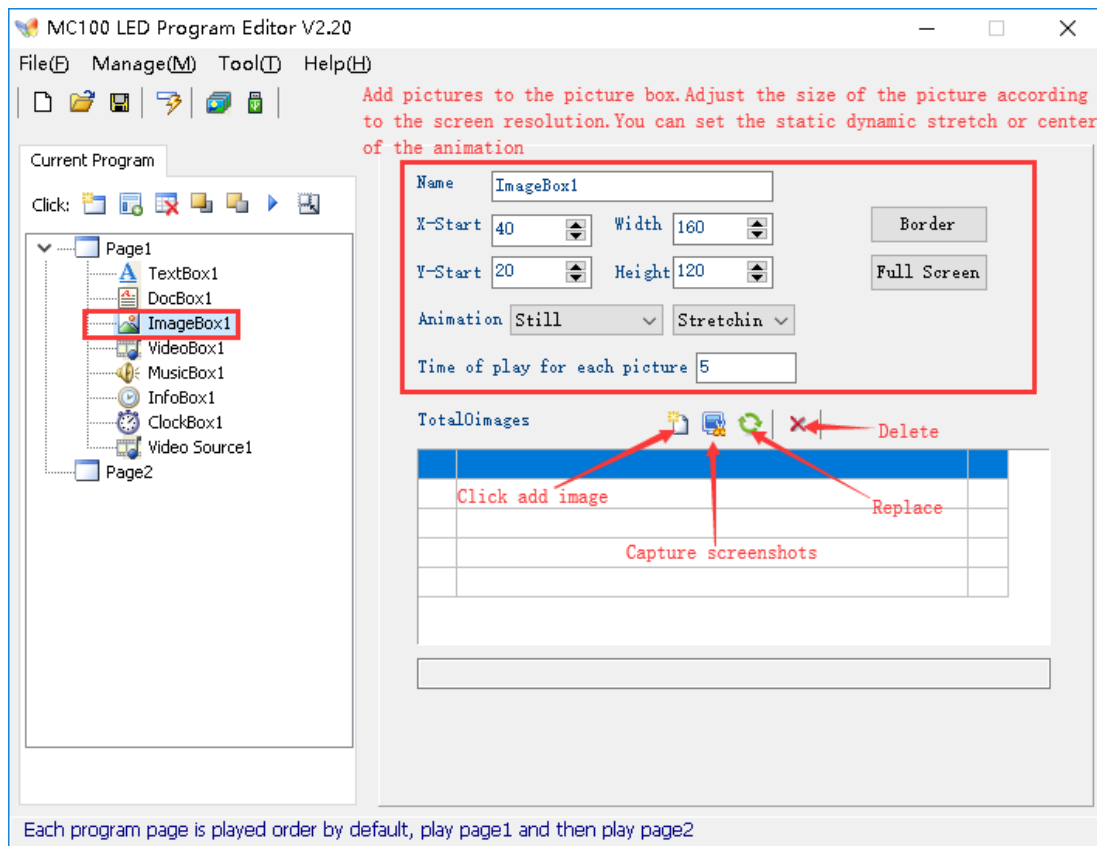
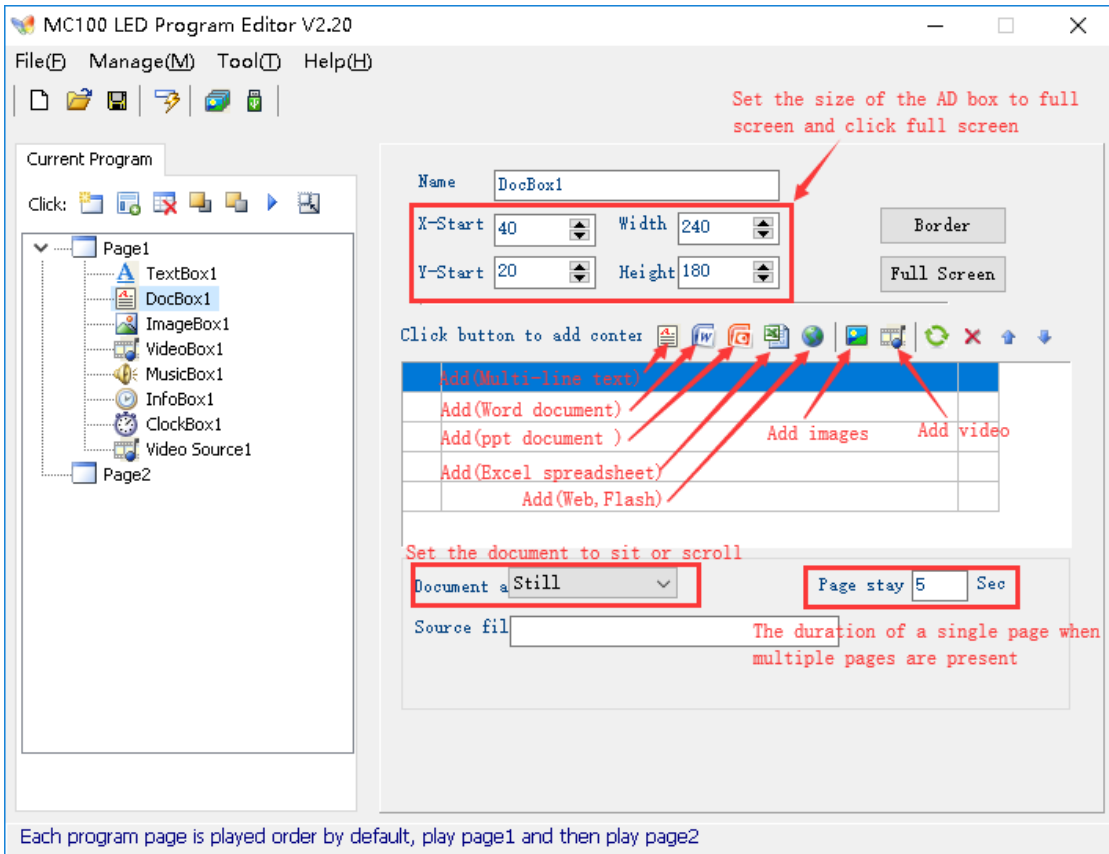
Click on the  add program box, Program box is divided into Text Box; AD box; Picture box; The film and Television box; Music box; Information box; Analog time clock.

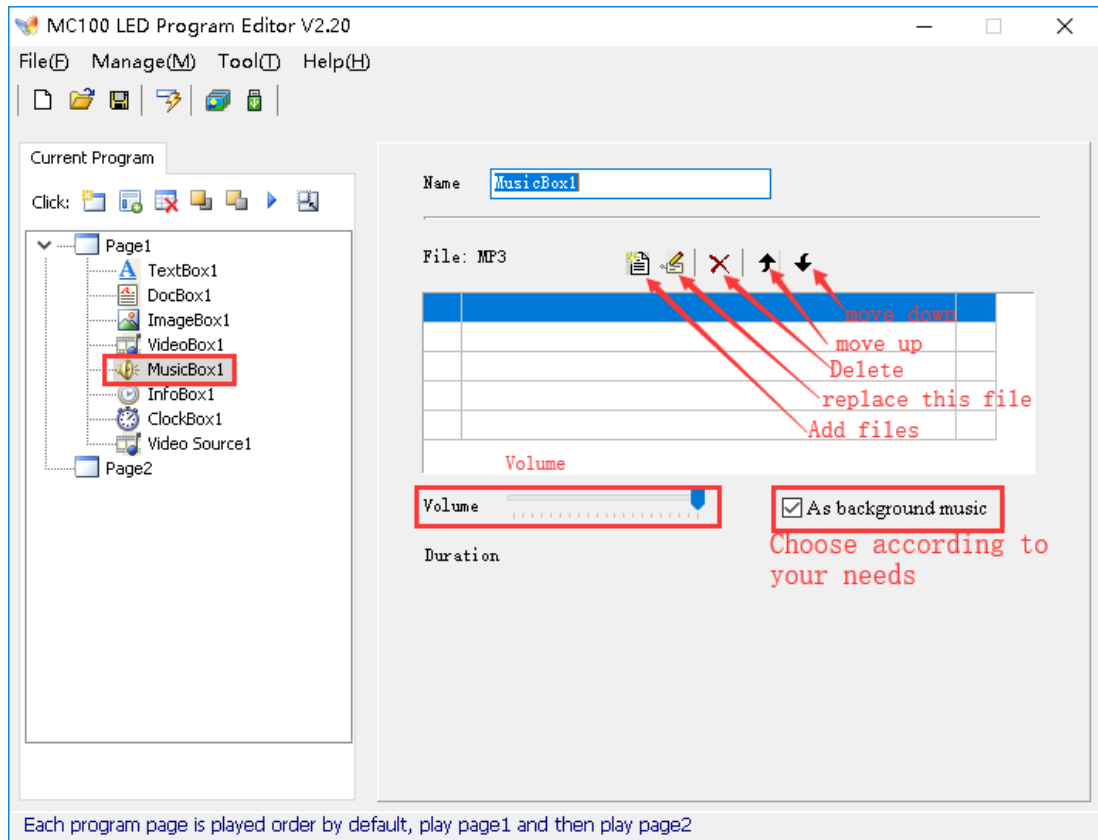
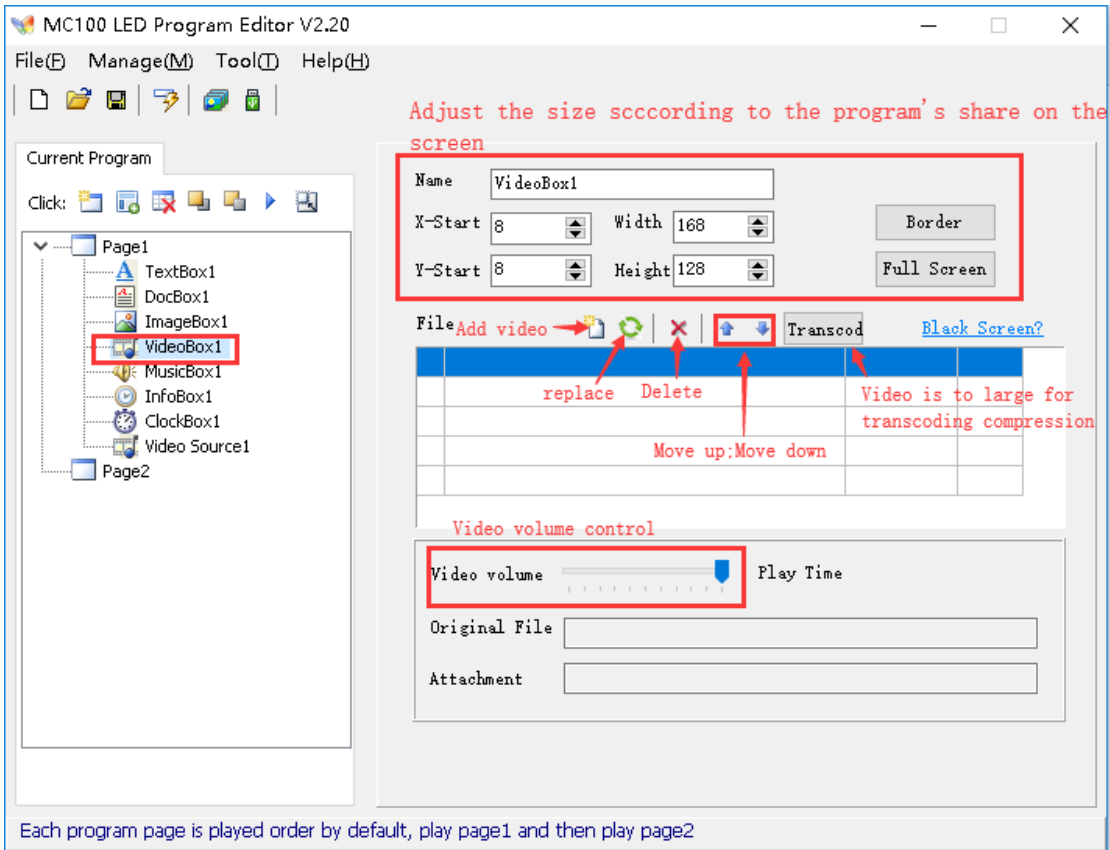


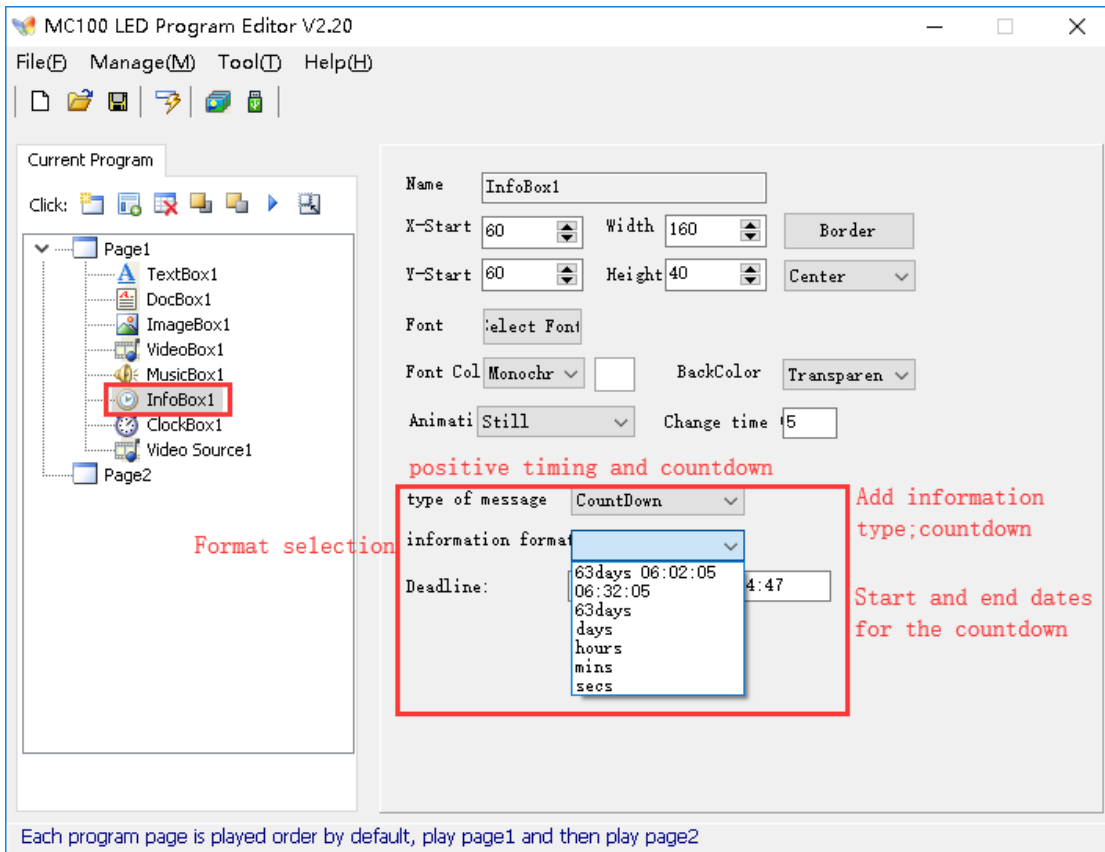
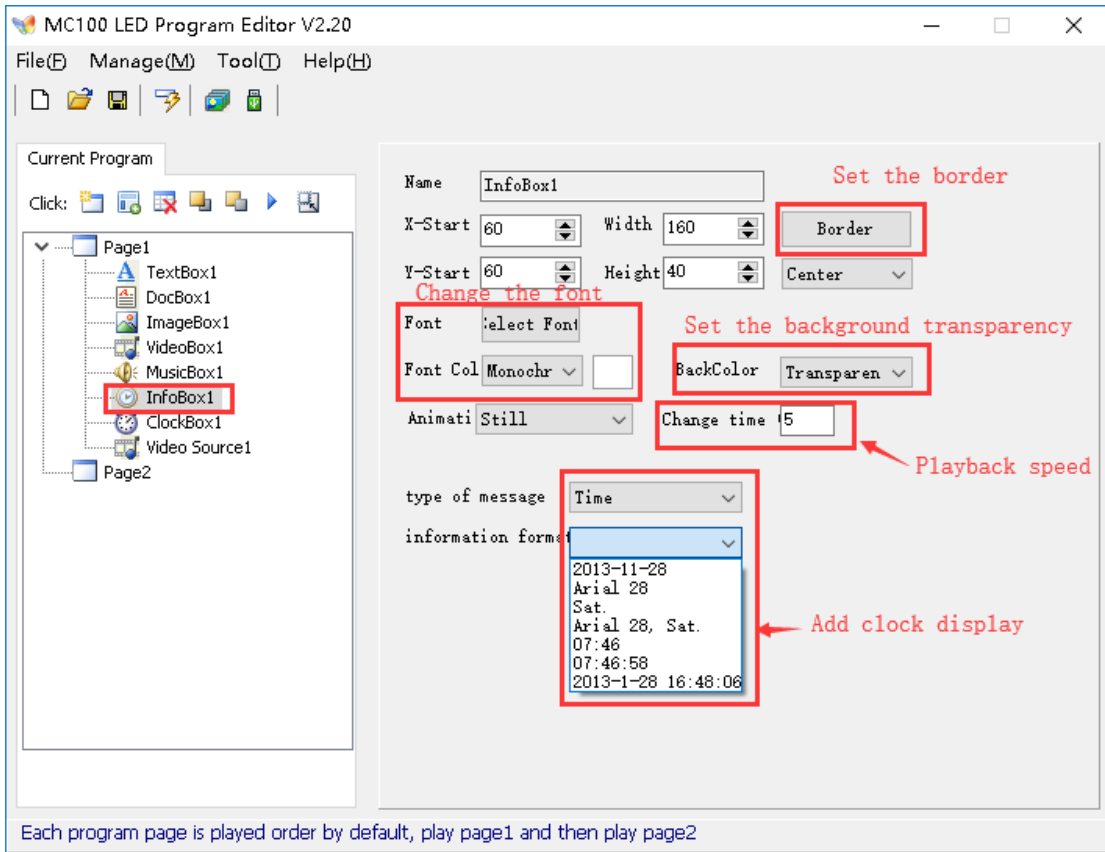
1.2 Program page, program box, icon detailed introduction

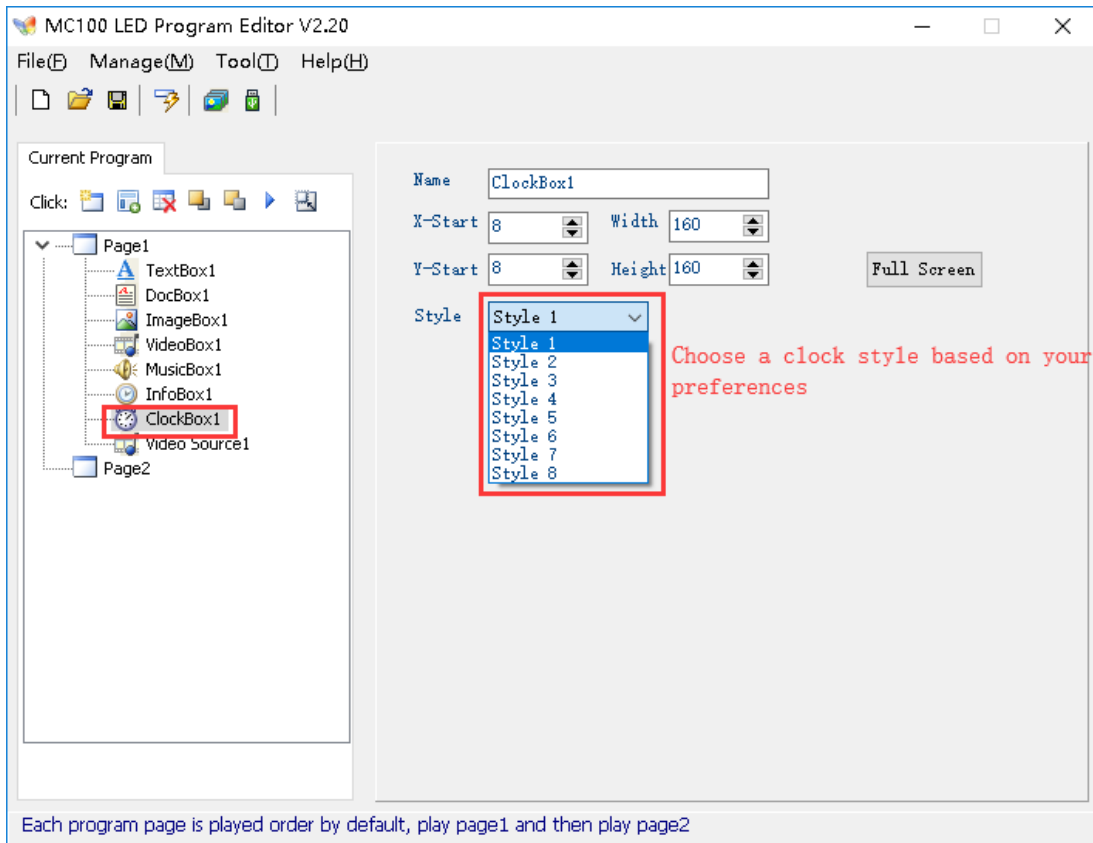






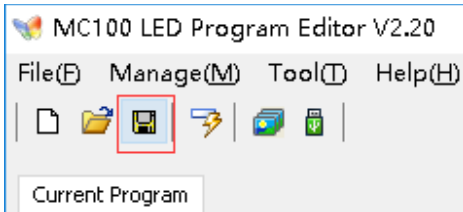






1.3 Program to save

Click the button to save the program after making the program, first use this software, the program production system will prompt you to create program folder, choose to save in the software file can be. Then click save, save successfully.

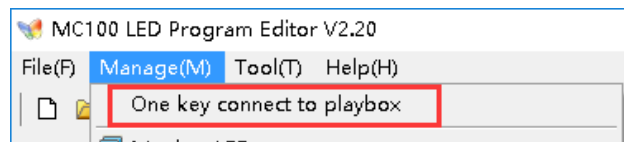


2. The Connection Method

2.1 A key connection

(1) Turn on the box, and the led2 light will light up. When it starts normal, the led1 light will light up. The large-screen network cable is connected to the 1000M port, and the LAN port is connected to the computer network card.

(2) Open the Mc100-led program editor on the computer and click [manage] to click [a key to connect the playbox].

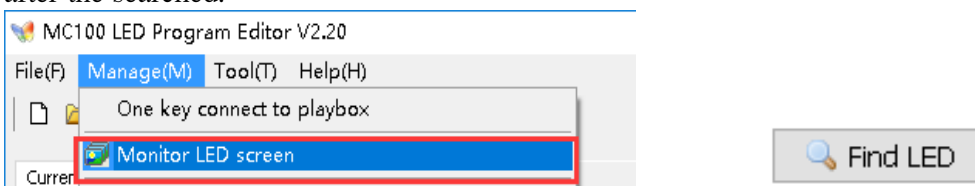


(3) Click to start the connection. After successful connection, you can upload the program, set the screen parameters and set the MC100 special receive cards.

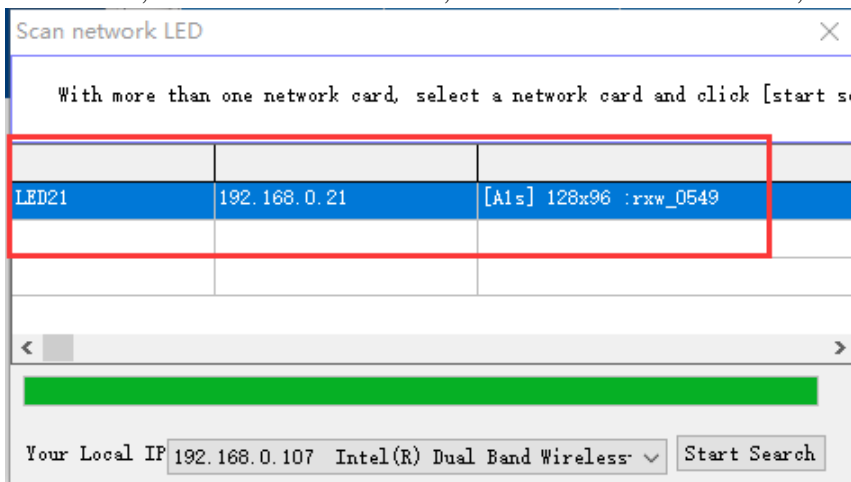
2.2 Find led screen and input IP connection

2.2.1 Find led screen connection

Open the Mc100-led software after the large screen display is normal, click manage and click Monitor LED screen, Click Find LED, Click [start search] to search, and close the window after the searched.



End of scan, Found the box IP. OK, the connection is successful, close this window.



2.2.2 Input IP connection

We know the led screen IP after, In a Monitor LED screen, We can see that

, Manually connect LED, enter IP: button.

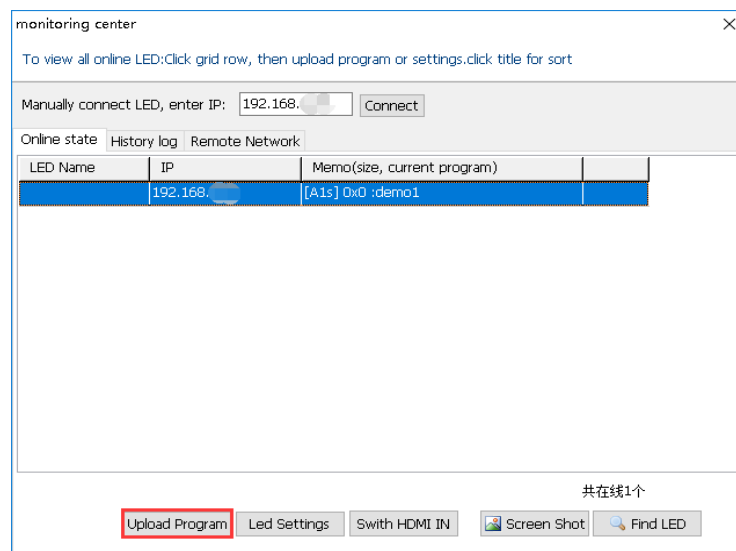
3. Upload programs

3.1 Upload with click on key connect to palybox

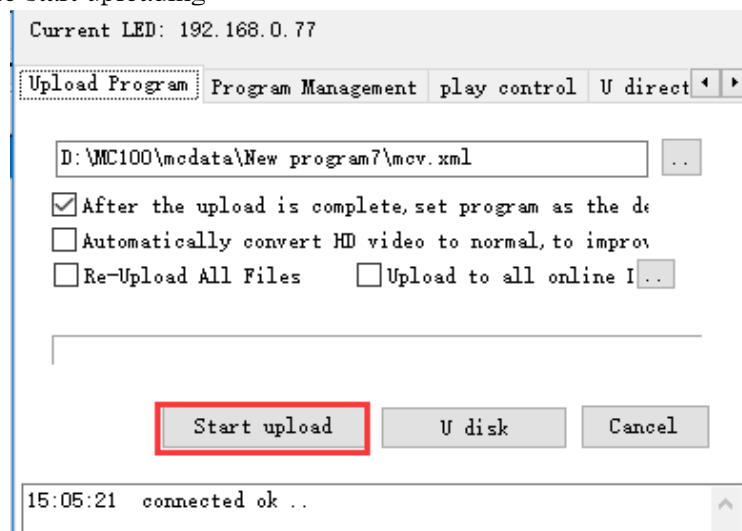
After successful connection, click the upload program, Upload the currently edited program, and the upload is successful.

3.2 Upload with click monitor LED screen

Monitor LED screen connection box selection click upload program



Select the program to start uploading

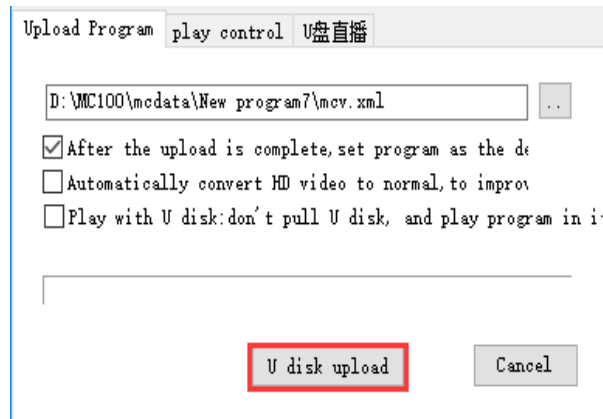


Watch screen changes

3.3 Upload program with USB flash drive

Plug the USB drive into the computer and open the program editor , Edited and saved

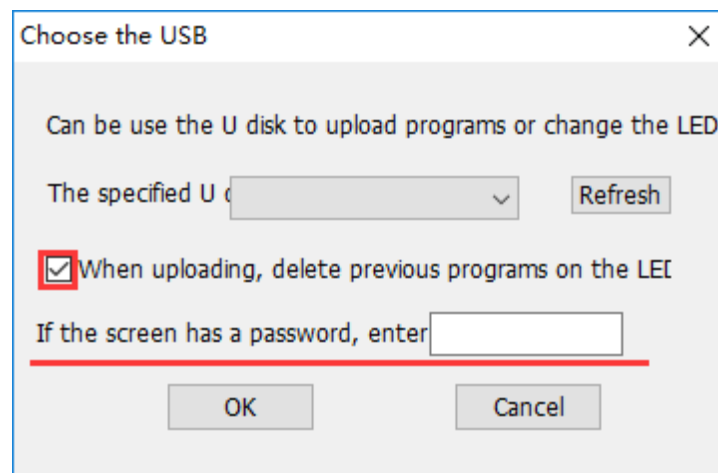
program , you want to upload, click , then click



Click after enter [U disk upload] note: If the file is too large and the storage space is not enough, you can choose to live on U disk direct display. Open the u disk for live streaming, click open u direct play and then click upload by u disk to insert the u disk into the box without pulling down.

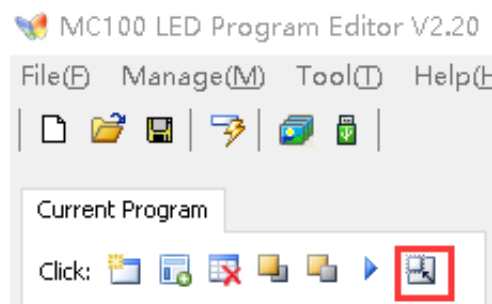
Click start U disk upload

If the screen has password input correct password click ok. Then insert the USB port of the

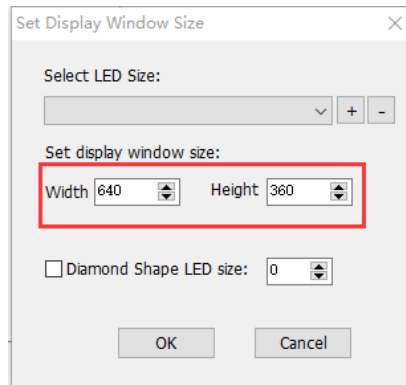


box (support 3.0) to watch the led screen. After reading the USB upload 100%, you can unplug the USB disk and finish uploading.

4. How does set the screen size ?



Click the icon as shown  (Or menu/manage/set the play window size)

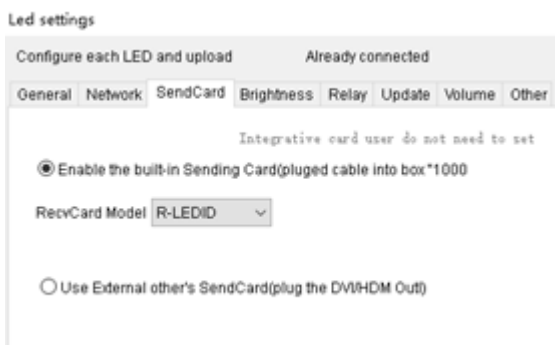


The input here is the pixels of the LED display

5. How to set the receive card type? How to switch between gigabit and DVI?

The box works by default in gigabit send mode. If the screen size is not displayed, you need to select the right receive card in the screen Settings.

Menu -> management -> screen setup -> send card -> select "enable built-in sending card" : as shown below and select RecvCard Model option according to the brand of the receiving card.



If your receiving card is another type of card, you can only use the DVI/HDMI output.

With DVI/HDMI output, select the "enable external send card" above, and then connect the card with DVI/HDMI.

(If you don't enable an external send card, you'll find that there's no text in the DVI mode, or the screen is black.)